

**7.1.2:  
Geo-tagged Photographs of the Facilities.**

A handwritten signature in green ink, appearing to read 'Anand', is written over a light blue grid background.

Director

Kanpur Institute of Technology And Pharmacy  
A-1, UPSIDC Industries Area, Rooma  
Kanpur-208001

## **Alternate Sources of Energy and Energy Conservation Measures**

A handwritten signature in green ink, appearing to read 'Anand S.', is written over a light blue grid background.

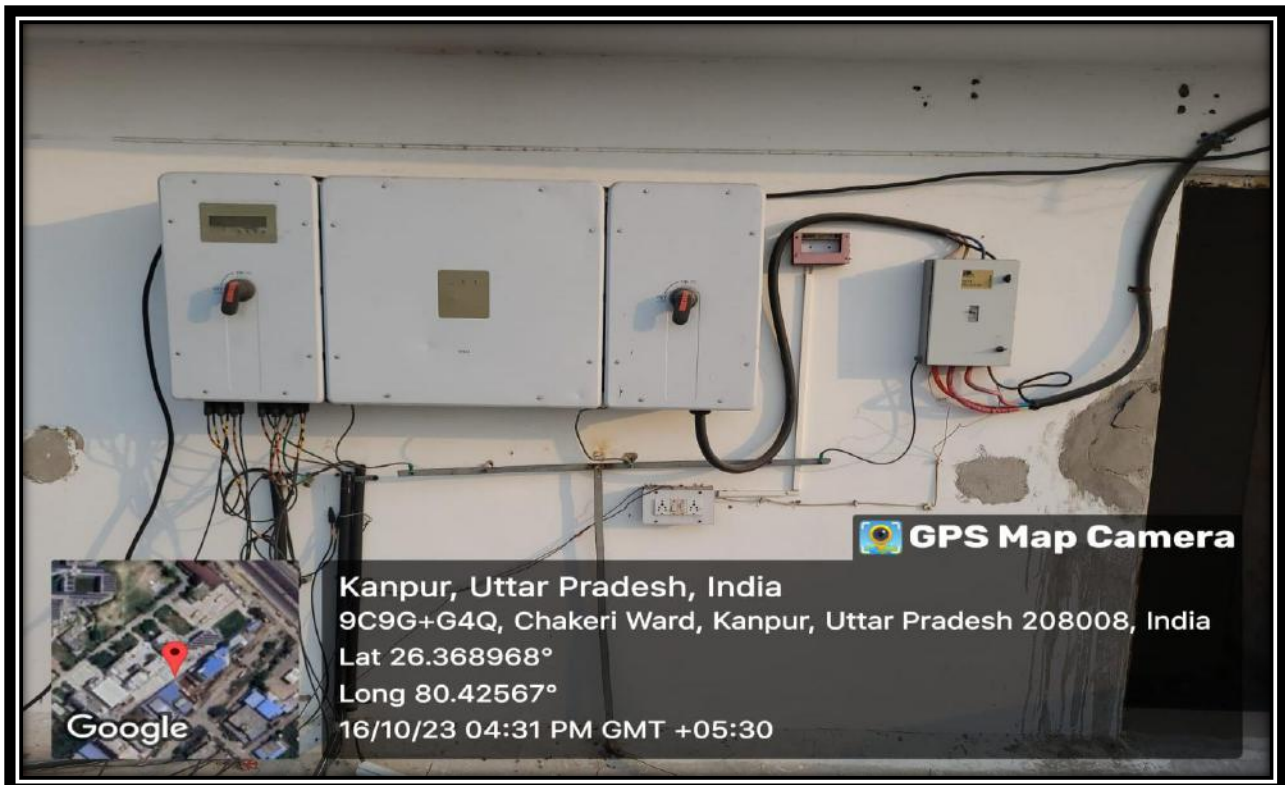
Director

Kanpur Institute of Technology And Pharmacy  
A-1, UPSIDC Industries Area, Rooma  
Kanpur-208001



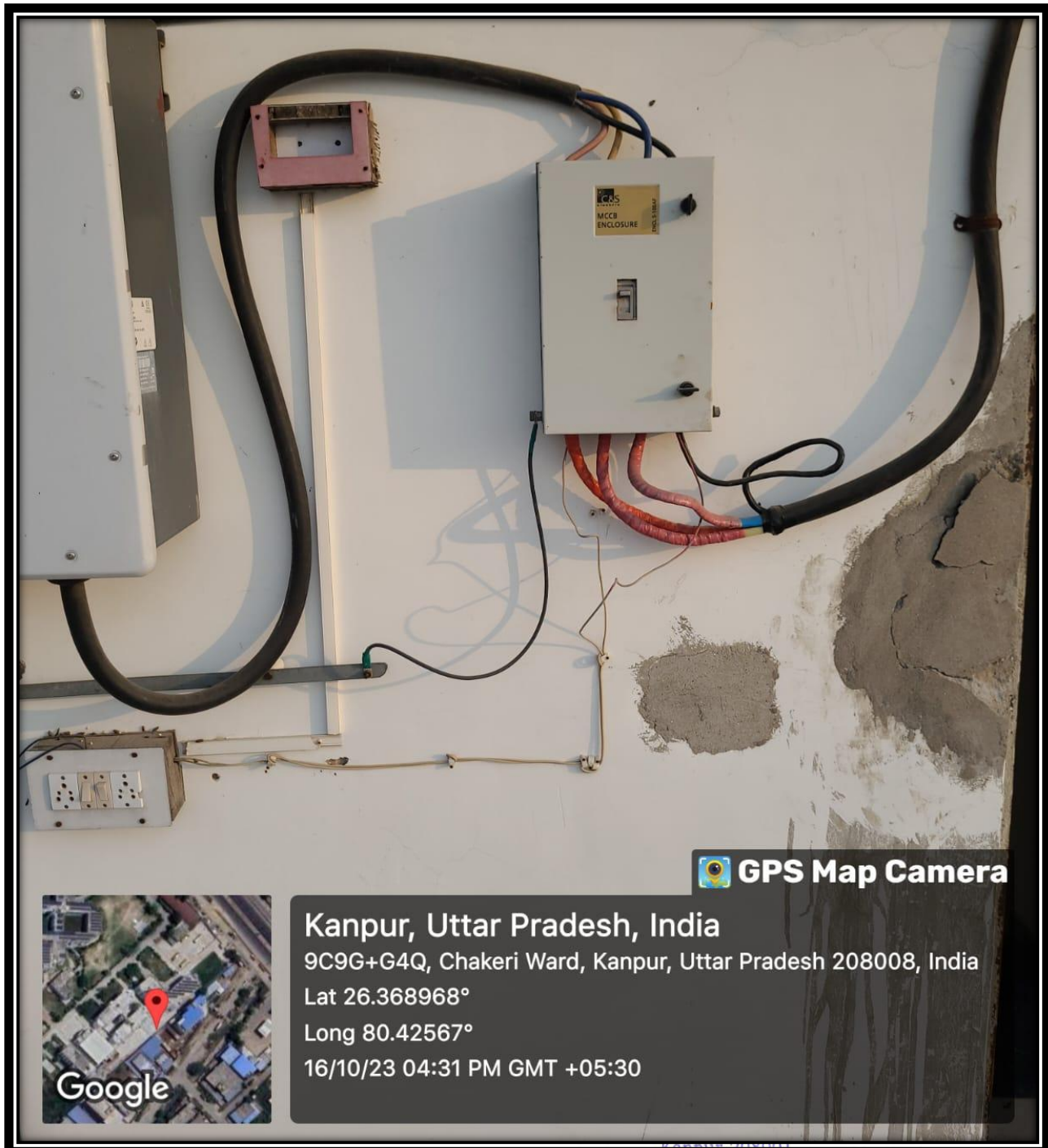
Director

Kanpur Institute of Technology And Pharmacy  
A-1, UPSIDC Industries Area, Rooma  
Kanpur-208001



Director

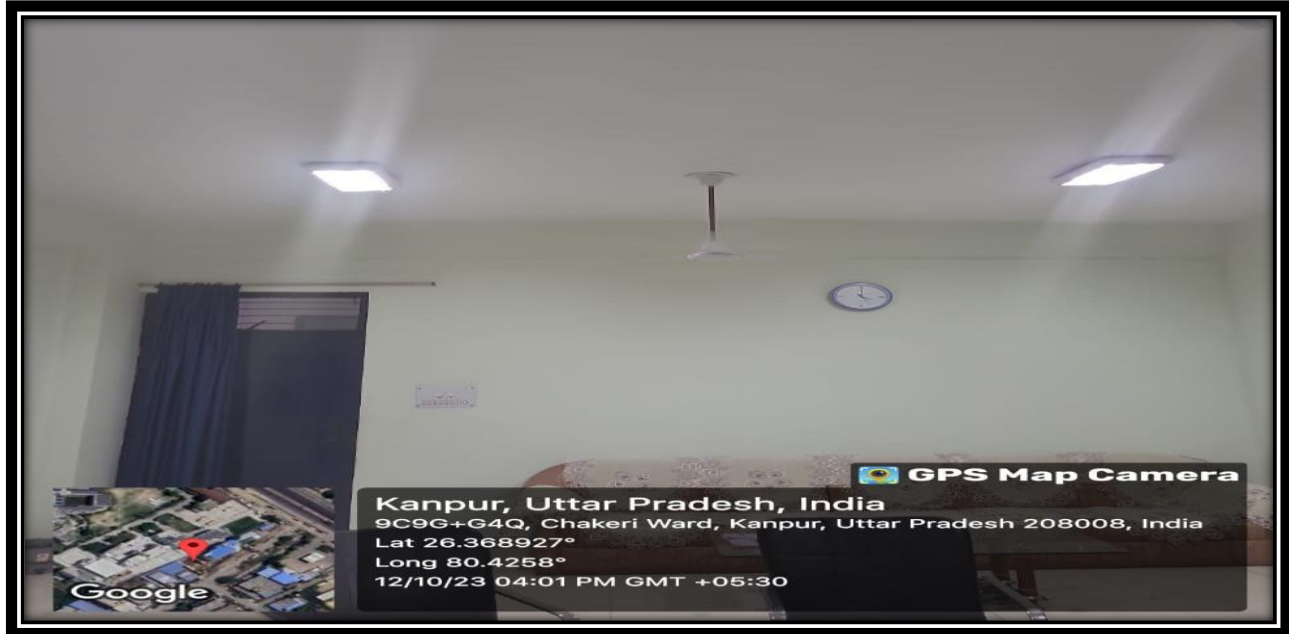
Kanpur Institute of Technology And Pharmacy  
A-1, UPSIDC Industries Area, Rooma  
Kanpur-208001



Director

Kanpur Institute of Technology And Pharmacy  
A-1, UPSIDC Industries Area, Rooma  
Kanpur-208001

## Energy Conservation Measure Use of Led Lights & Energy Efficient Appliances



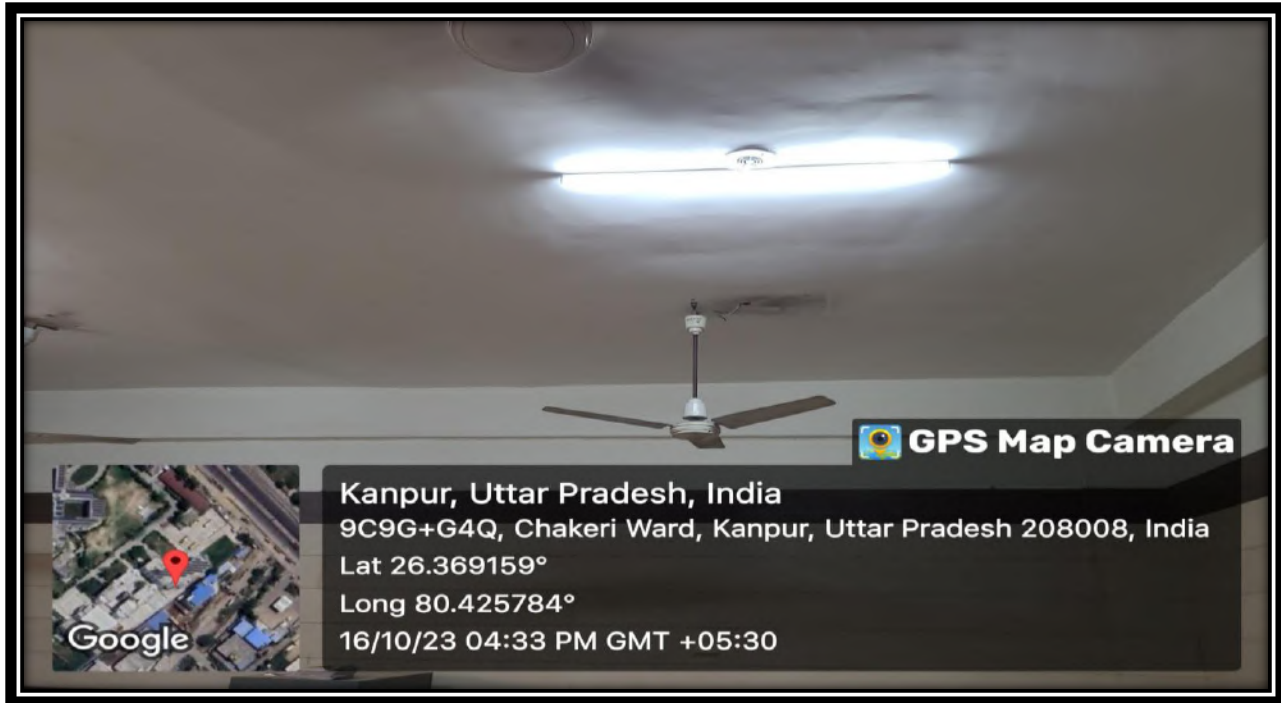
Director

Kanpur Institute of Technology And Pharmacy  
A-1, UPSIDC Industries Area, Rooma  
Kanpur-208001



Director

Kanpur Institute of Technology And Pharmacy  
A-1, UPSIDC Industries Area, Rooma  
Kanpur-208001



Director

Kanpur Institute of Technology And Pharmacy  
A-1, UPSIDC Industries Area, Rooma  
Kanpur-208001





Director

Kanpur Institute of Technology And Pharmacy  
A-1, UPSIDC Industries Area, Rooma  
Kanpur-208001



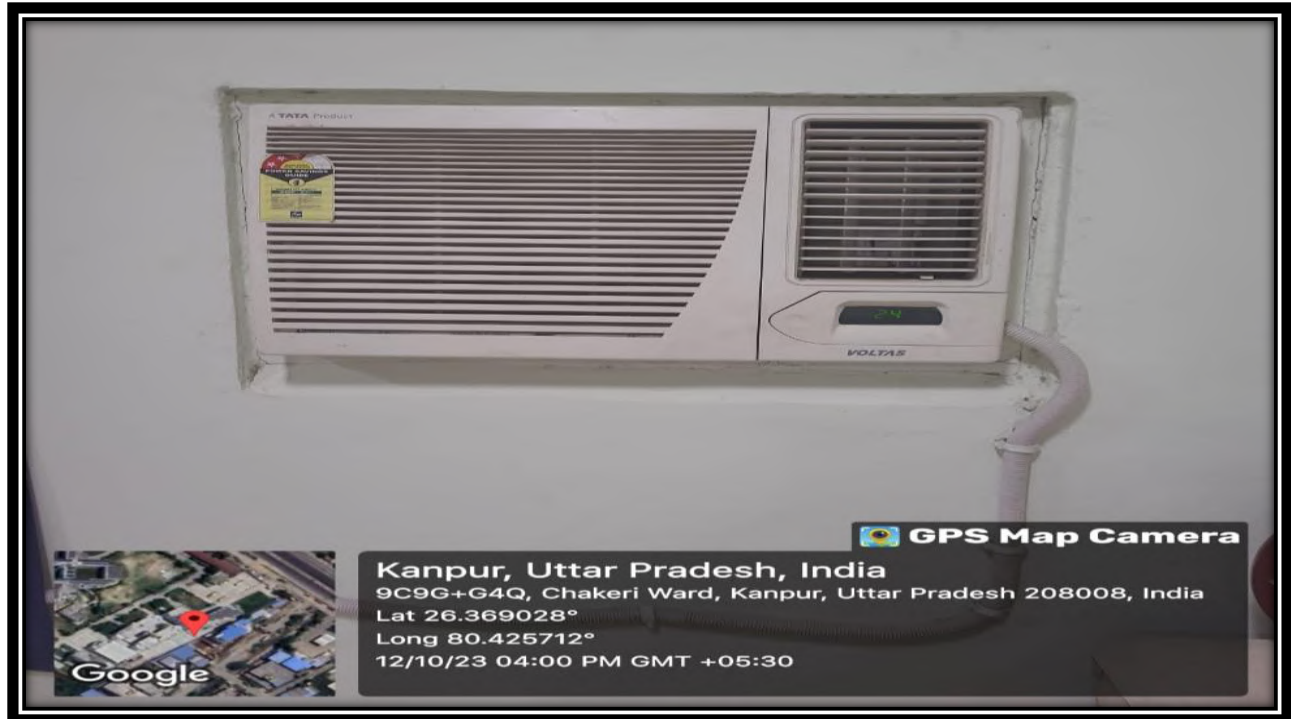
Director

Kanpur Institute of Technology And Pharmacy  
A-1, UPSIDC Industries Area, Rooma  
Kanpur-208001



Director

Kanpur Institute of Technology And Pharmacy  
A-1, UPSIDC Industries Area, Rooma  
Kanpur-208001



Director

Kanpur Institute of Technology And Pharmacy  
A-1, UPSIDC Industries Area, Rooma  
Kanpur-208001

## **Management of the various types of degradable and non degradable waste**

A handwritten signature in green ink, appearing to read 'Anand', is written over a light blue grid background.

Director

Kanpur Institute of Technology And Pharmacy  
A-1, UPSIDC Industries Area, Rooma  
Kanpur-208001

## Separate Dustbin



Director

Kanpur Institute of Technology And Pharmacy  
A-1, UPSIDC Industries Area, Rooma  
Kanpur-208001

## Scrap Disposal



## Waste Disposal



Director

Kanpur Institute of Technology And Pharmacy  
A-1, UPSIDC Industries Area, Rooma  
Kanpur-208001





Director

Kanpur Institute of Technology And Pharmacy  
A-1, UPSIDC Industries Area, Rooma  
Kanpur-208001

## Degradable waste



Director

Kanpur Institute of Technology And Pharmacy  
A-1, UPSIDC Industries Area, Rooma  
Kanpur-208001



# **KANPUR INSTITUTE OF TECHNOLOGY AND PHARMACY**

A-1, UPSIDC Industrial Area, Rooma, Kanpur-208001 (U.P.) India  
Ph: 7705011891 • E-Mail-ID: info.kitp@kit.ac.in, director.kitp@kit.ac.in

---

## **WATERCONSERVATION**

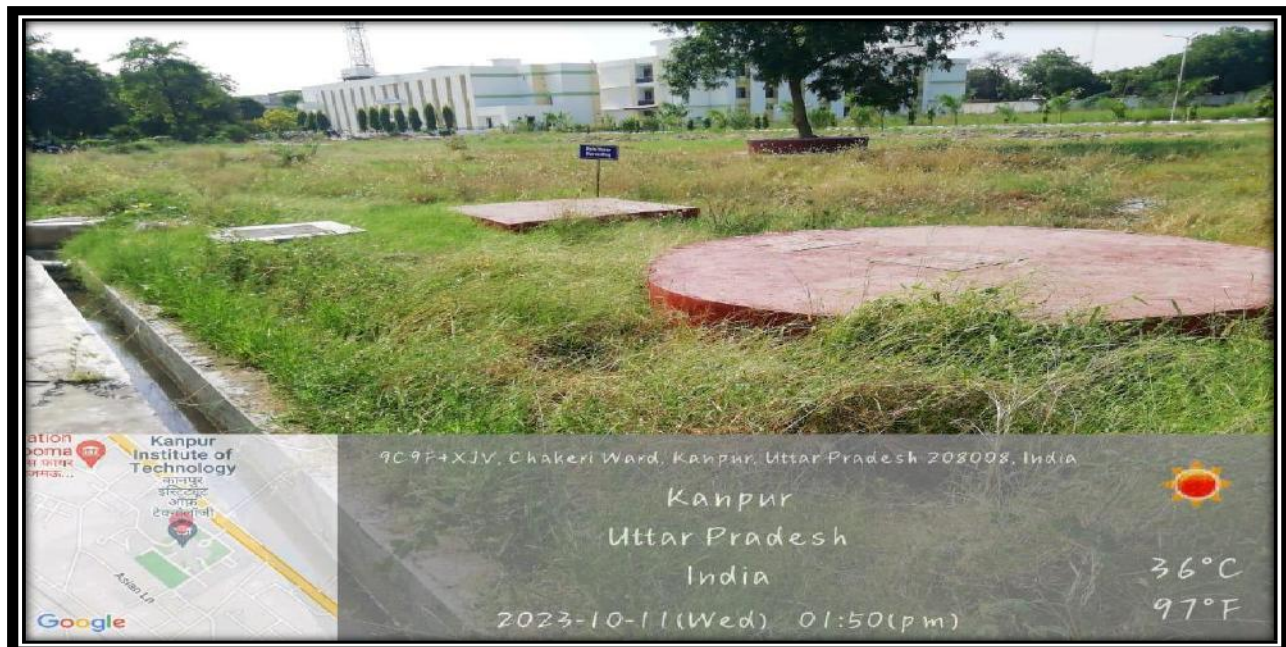
## RO Waste water Management



Director

Kanpur Institute of Technology And Pharmacy  
A-1, UPSIDC Industries Area, Rooma  
Kanpur-208001

## Rain Water Harvesting



Director

Kanpur Institute of Technology And Pharmacy  
A-1, UPSIDC Industries Area, Rooma  
Kanpur-208001

## **Green Campus Initiatives**

## PLANTATION DRIVE

To promote greenery in the campus, KITP regular organises Plantation Drives.



Director

Kanpur Institute of Technology And Pharmacy  
A-1, UPSIDC Industries Area, Rooma  
Kanpur-208001



Director

Kanpur Institute of Technology And Pharmacy  
A-1, UPSIDC Industries Area, Rooma  
Kanpur-208001





Director

Kanpur Institute of Technology And Pharmacy  
A-1, UPSIDC Industries Area, Rooma  
Kanpur-208001



Director

Kanpur Institute of Technology And Pharmacy  
A-1, UPSIDC Industries Area, Rooma  
Kanpur-208001



Director

Kanpur Institute of Technology And Pharmacy  
A-1, UPSIDC Industries Area, Rooma  
Kanpur-208001



Director

Kanpur Institute of Technology And Pharmacy  
A-1, UPSIDC Industries Area, Rooma  
Kanpur-208001



Director

Kanpur Institute of Technology And Pharmacy  
A-1, UPSIDC Industries Area, Rooma  
Kanpur-208001



9CH9+69Q, Chakeri Ward, Kanpur, Uttar Pradesh  
208008, India

Latitude  
26.37697°

Longitude  
80.4196119°

Local 02:23:22 PM  
GMT 08:53:22 AM

Altitude 0 meters  
Thursday, 07-07-2022



Director

Kanpur Institute of Technology And Pharmacy  
A-1, UPSIDC Industries Area, Rooma  
Kanpur-208001



Director

Kanpur Institute of Technology And Pharmacy  
A-1, UPSIDC Industries Area, Rooma  
Kanpur-208001

## Celebration of World Environment Day



Director

Kanpur Institute of Technology And Pharmacy  
A-1, UPSIDC Industries Area, Rooma  
Kanpur-208001





Director

Kanpur Institute of Technology And Pharmacy  
A-1, UPSIDC Industries Area, Rooma  
Kanpur-208001



Director

Kanpur Institute of Technology And Pharmacy  
A-1, UPSIDC Industries Area, Rooma  
Kanpur-208001

## Celebration of Earth day



Director

Kanpur Institute of Technology And Pharmacy  
A-1, UPSIDC Industries Area, Rooma  
Kanpur-208001



Director

Kanpur Institute of Technology And Pharmacy  
A-1, UPSIDC Industries Area, Rooma  
Kanpur-208001



Director

Kanpur Institute of Technology And Pharmacy  
A-1, UPSIDC Industries Area, Rooma  
Kanpur-208001



Director

Kanpur Institute of Technology And Pharmacy  
A-1, UPSIDC Industries Area, Rooma  
Kanpur-208001

## Nukkad Natak on “Say No to Plastic”



Director

Kanpur Institute of Technology And Pharmacy  
A-1, UPSIDC Industries Area, Rooma  
Kanpur-208001

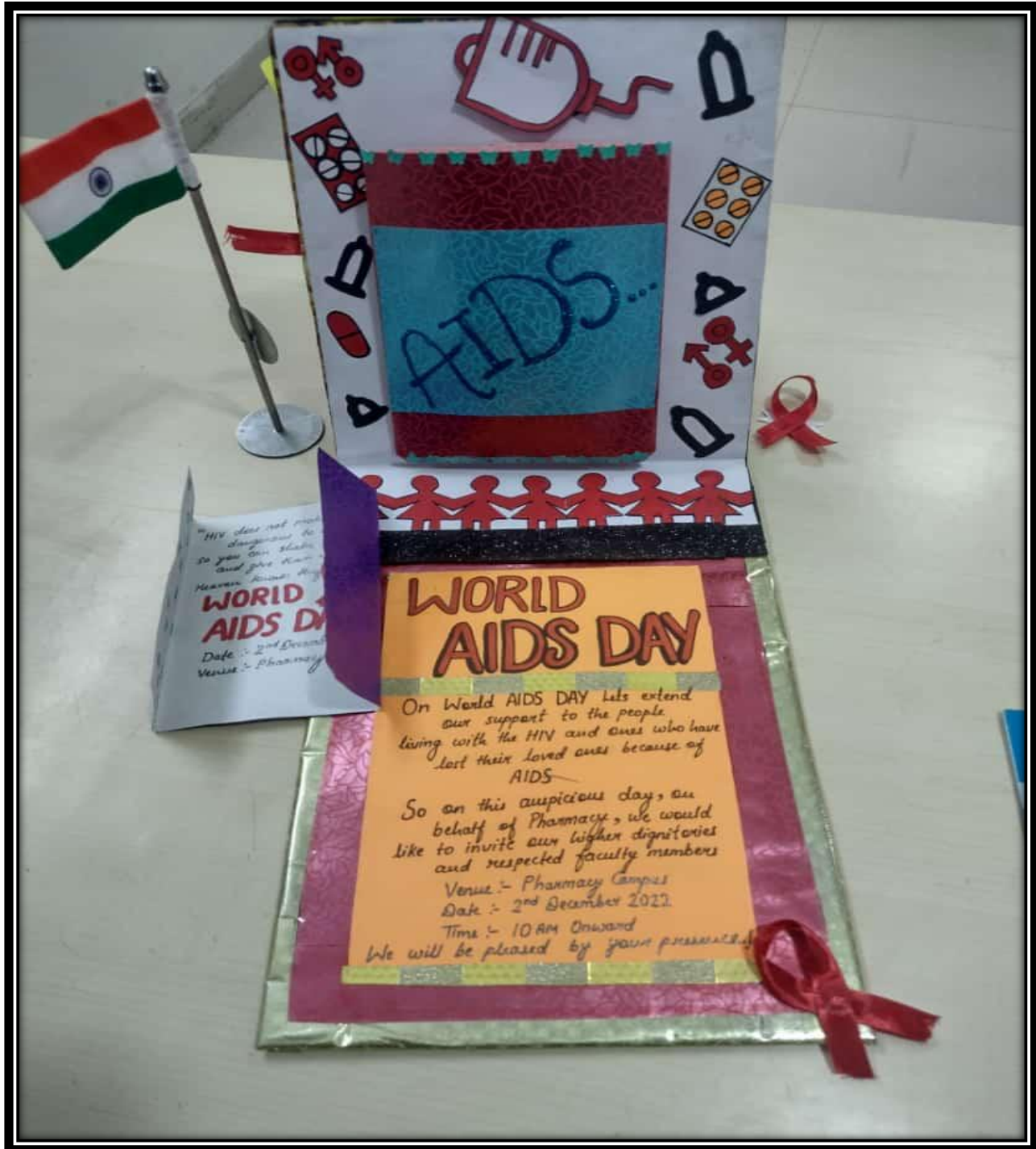
“Best from Waste”



Director

Kanpur Institute of Technology And Pharmacy  
A-1, UPSIDC Industries Area, Rooma  
Kanpur-208001





Director

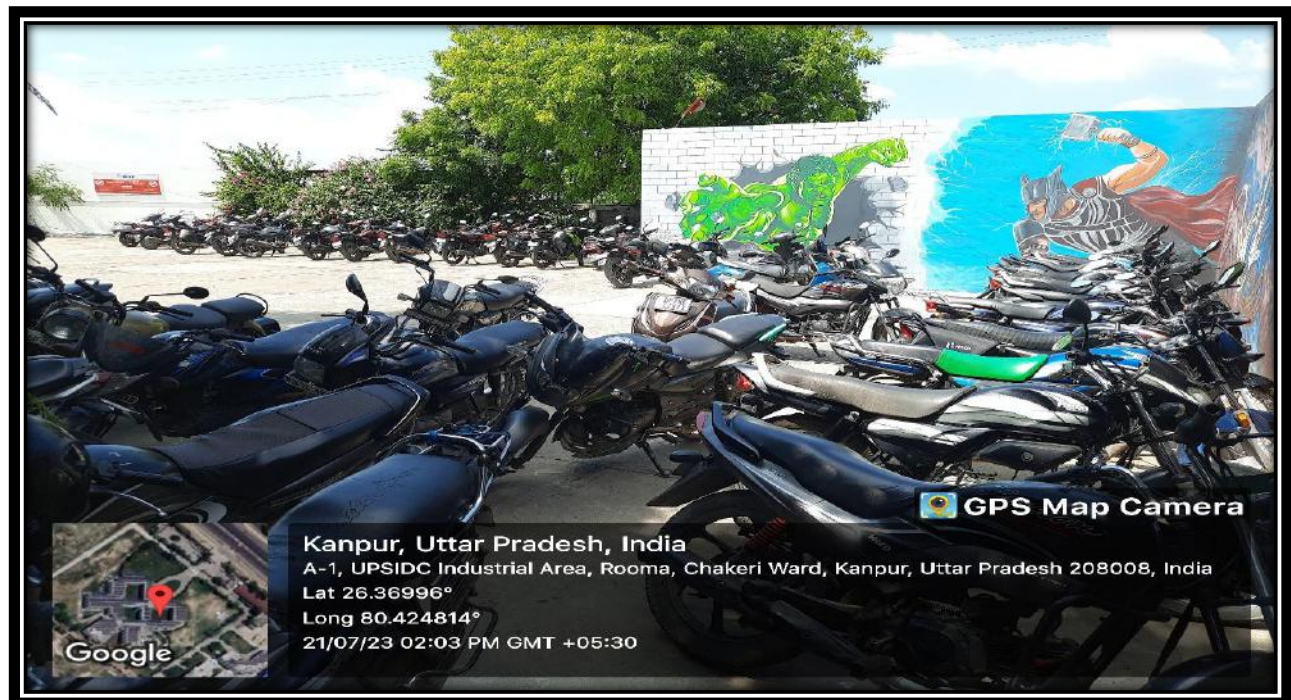
Kanpur Institute of Technology And Pharmacy  
A-1, UPSIDC Industries Area, Rooma  
Kanpur-208001



Director

Kanpur Institute of Technology And Pharmacy  
A-1, UPSIDC Industries Area, Rooma  
Kanpur-208001

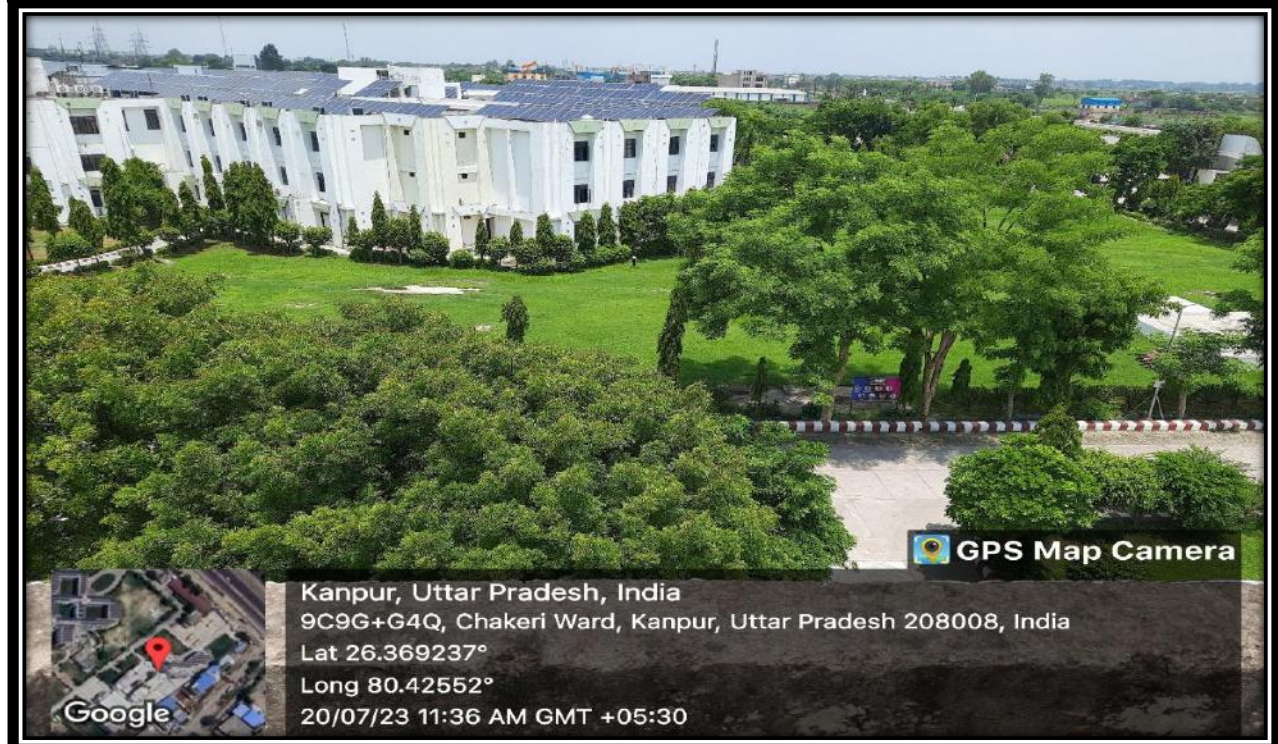
## Restricted Entry of Automobiles In Campus



Director

Kanpur Institute of Technology And Pharmacy  
A-1, UPSIDC Industries Area, Rooma  
Kanpur-208001

## Lush Green Campus



Director

Kanpur Institute of Technology And Pharmacy  
A-1, UPSIDC Industries Area, Rooma  
Kanpur-208001



Director

Kanpur Institute of Technology And Pharmacy  
A-1, UPSIDC Industries Area, Rooma  
Kanpur-208001

**Disabled-Friendly, Barrier free Environment**

## RAMPS



Director

Kanpur Institute of Technology And Pharmacy  
A-1, UPSIDC Industries Area, Rooma  
Kanpur-208001

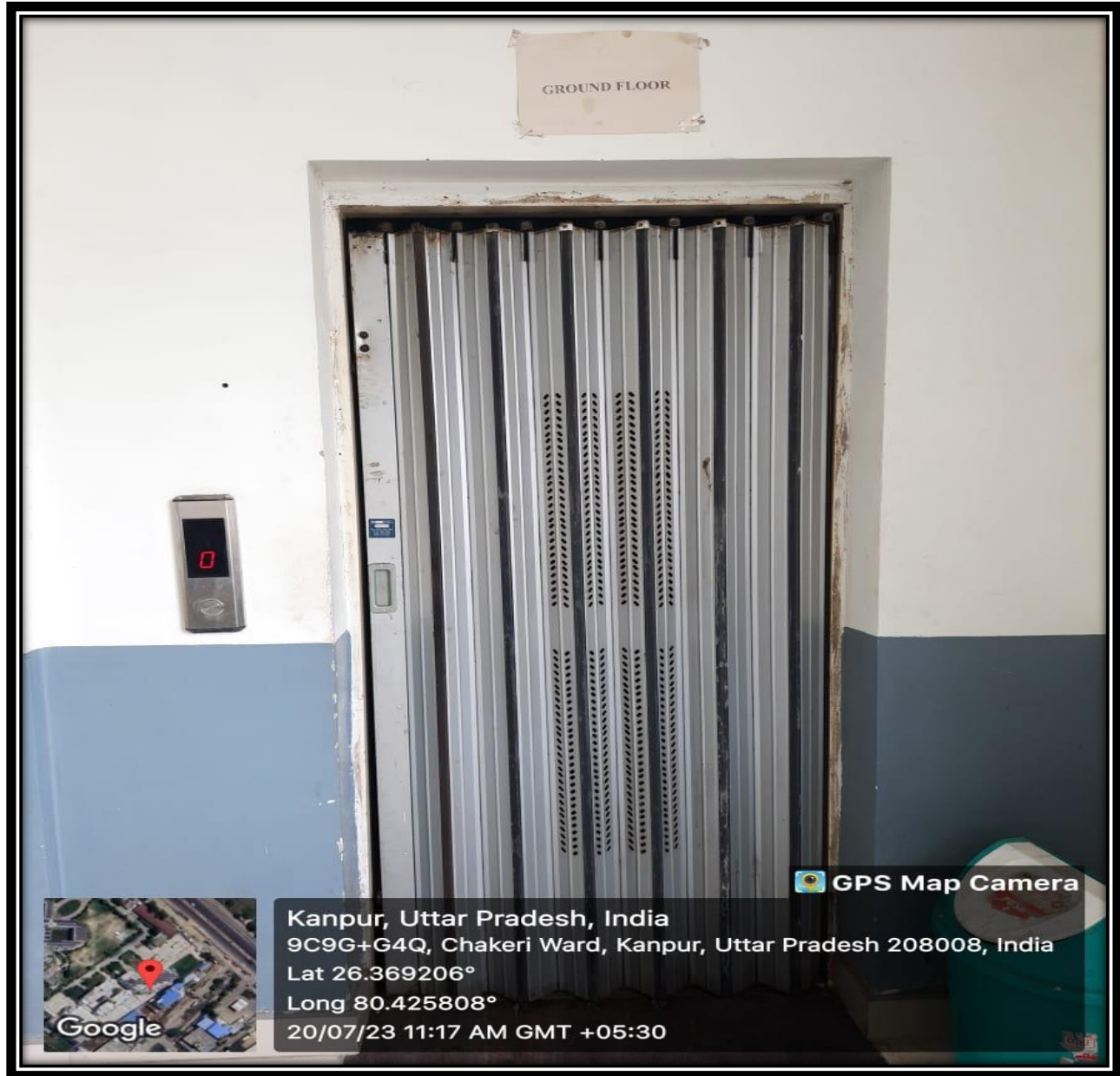


Director

Kanpur Institute of Technology And Pharmacy  
A-1, UPSIDC Industries Area, Rooma  
Kanpur-208001

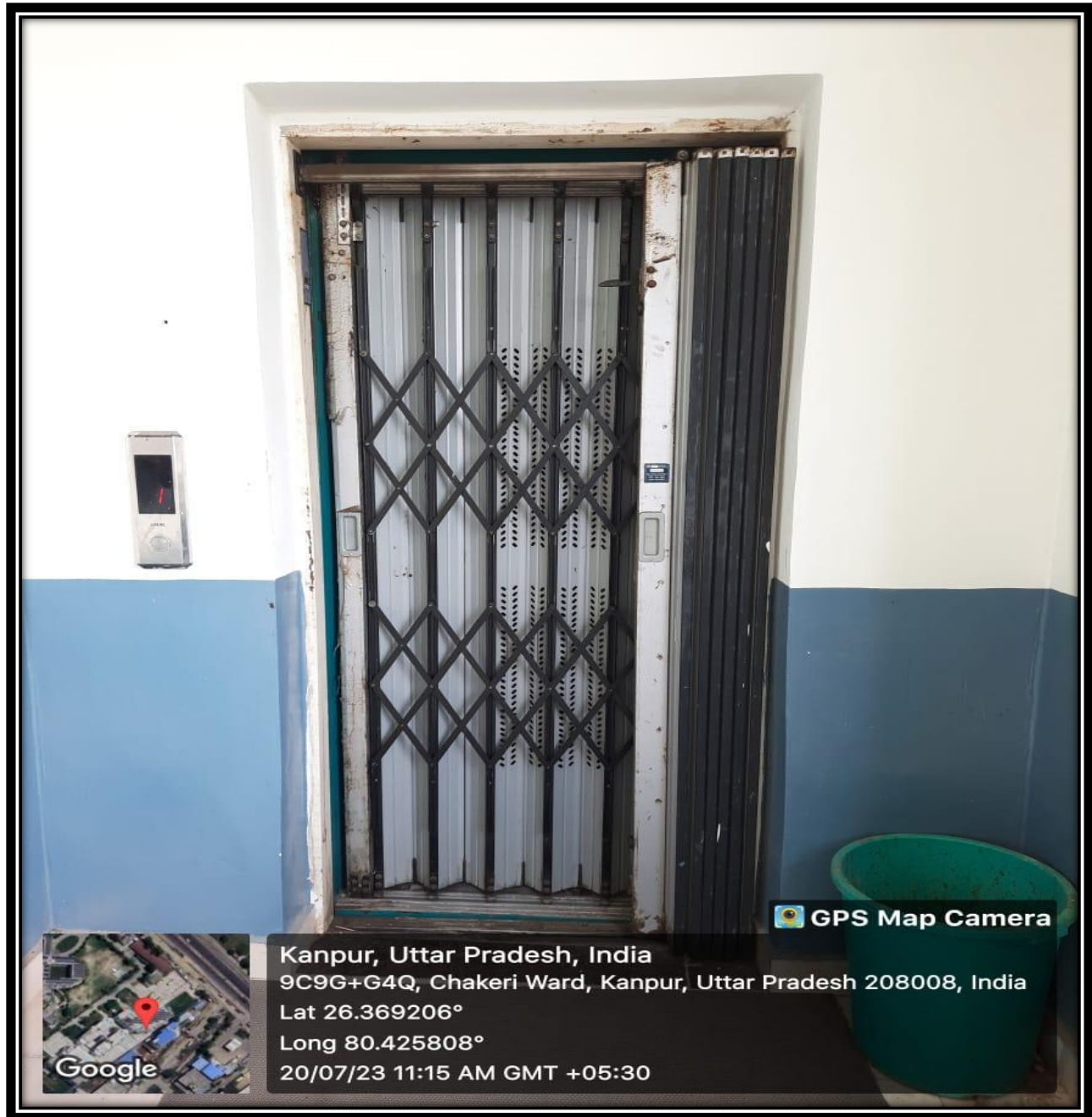


## LIFTS



Director

Kanpur Institute of Technology And Pharmacy  
A-1, UPSIDC Industries Area, Rooma  
Kanpur-208001



Director

Kanpur Institute of Technology And Pharmacy  
A-1, UPSIDC Industries Area, Rooma  
Kanpur-208001

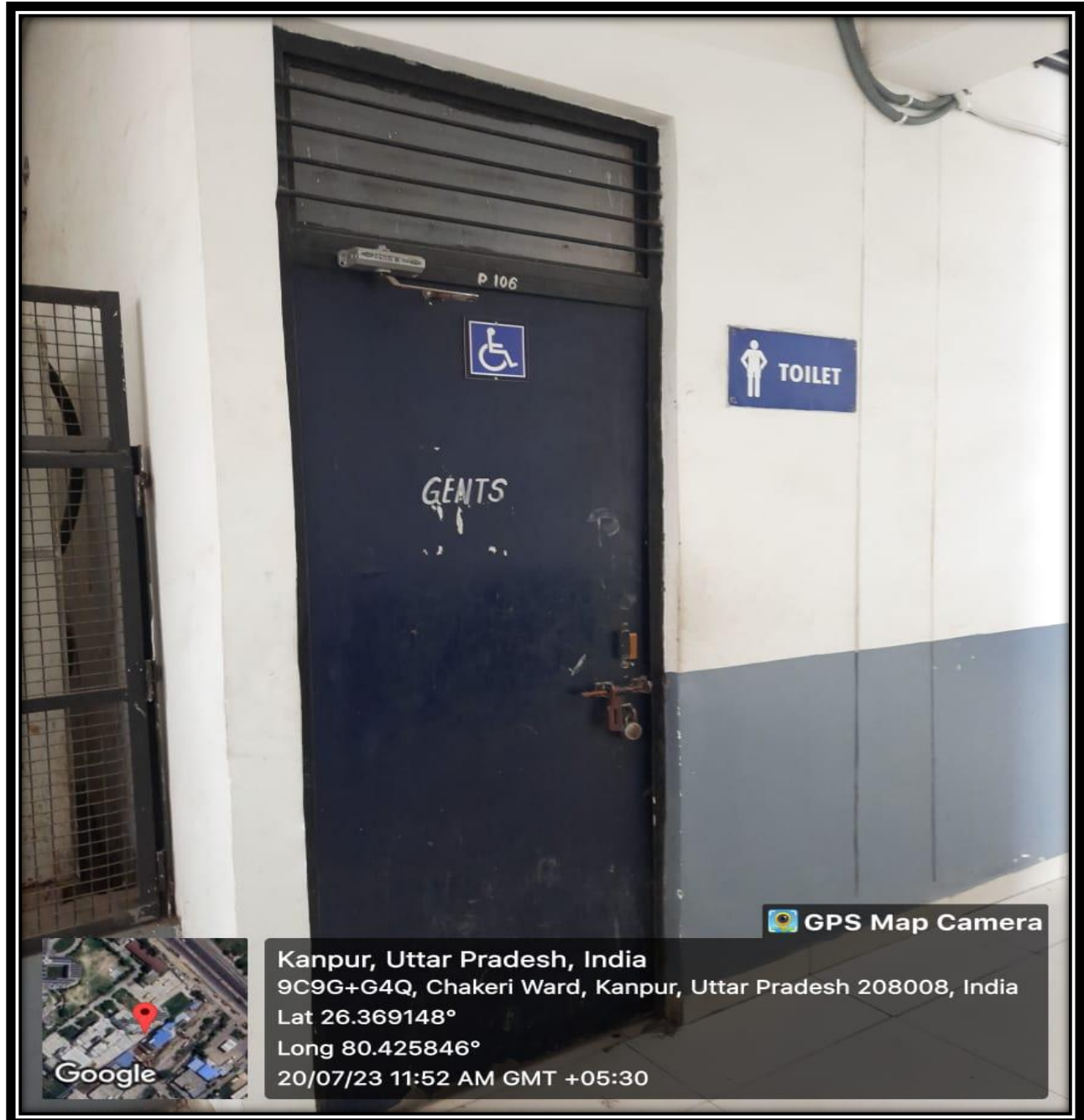
## WHEELCHAIR



Director

Kanpur Institute of Technology And Pharmacy  
A-1, UPSIDC Industries Area, Rooma  
Kanpur-208001

## DISABLED- FRIENDLY WASHROOMS



Director

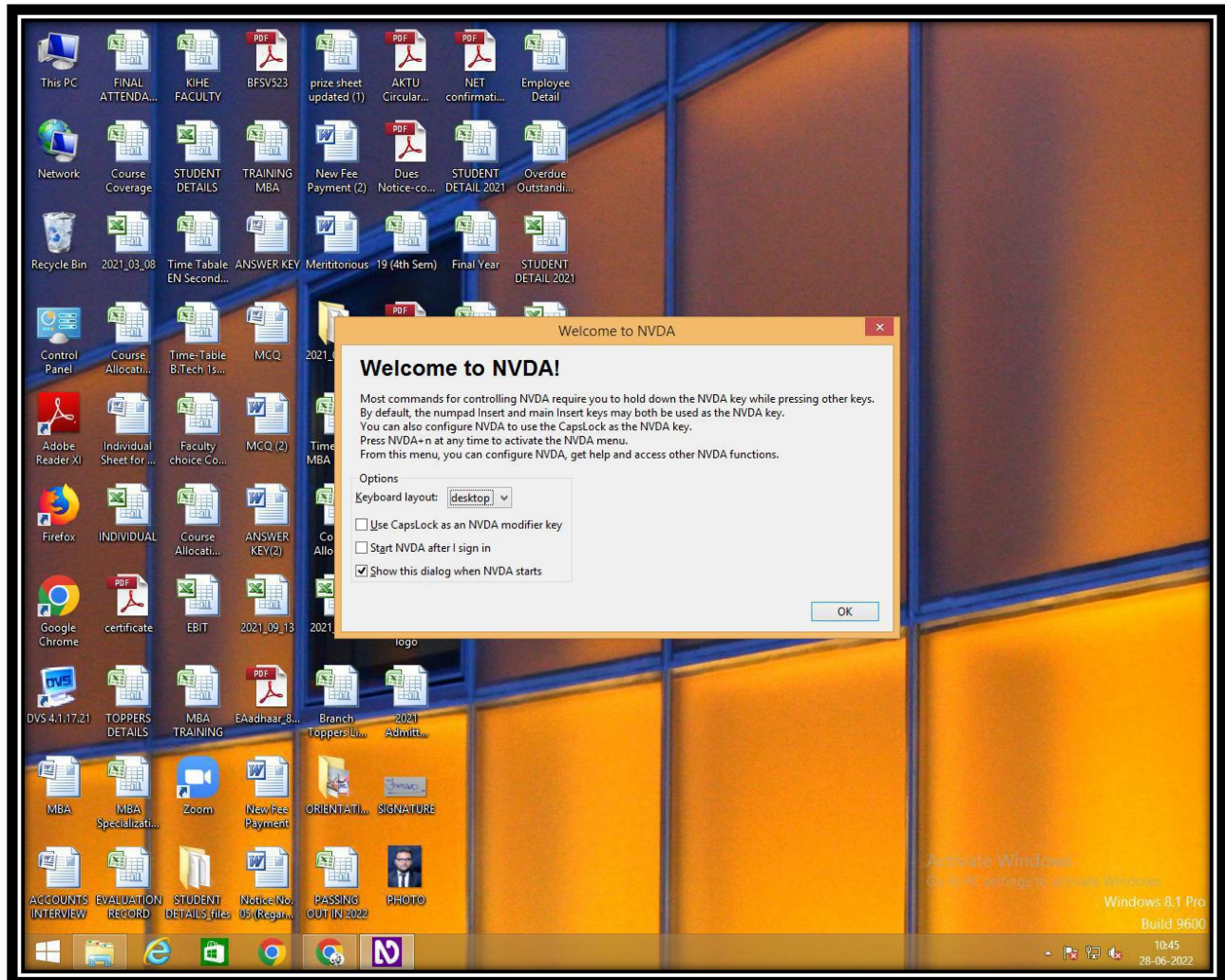
Kanpur Institute of Technology And Pharmacy  
A-1, UPSIDC Industries Area, Rooma  
Kanpur-208001



Director

Kanpur Institute of Technology And Pharmacy  
A-1, UPSIDC Industries Area, Rooma  
Kanpur-208001

## DISABLE- FRIENDLY SOFTWARE



Director

Kanpur Institute of Technology And Pharmacy  
A-1, UPSIDC Industries Area, Rooma  
Kanpur-208001